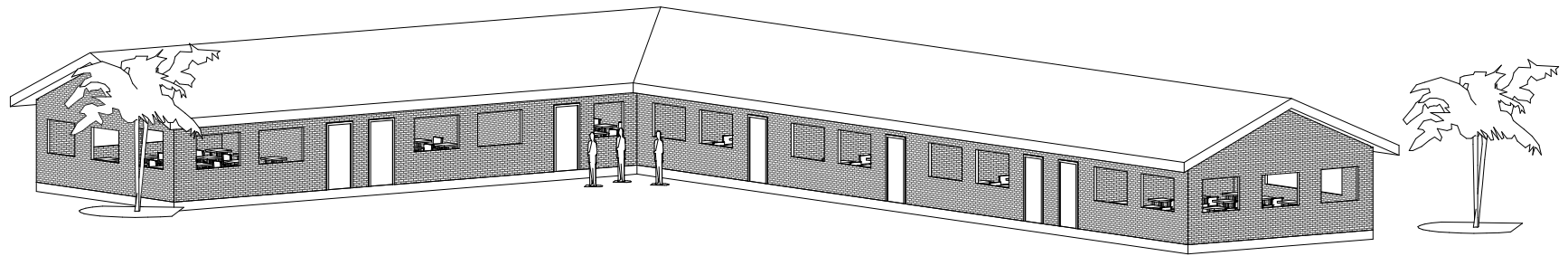
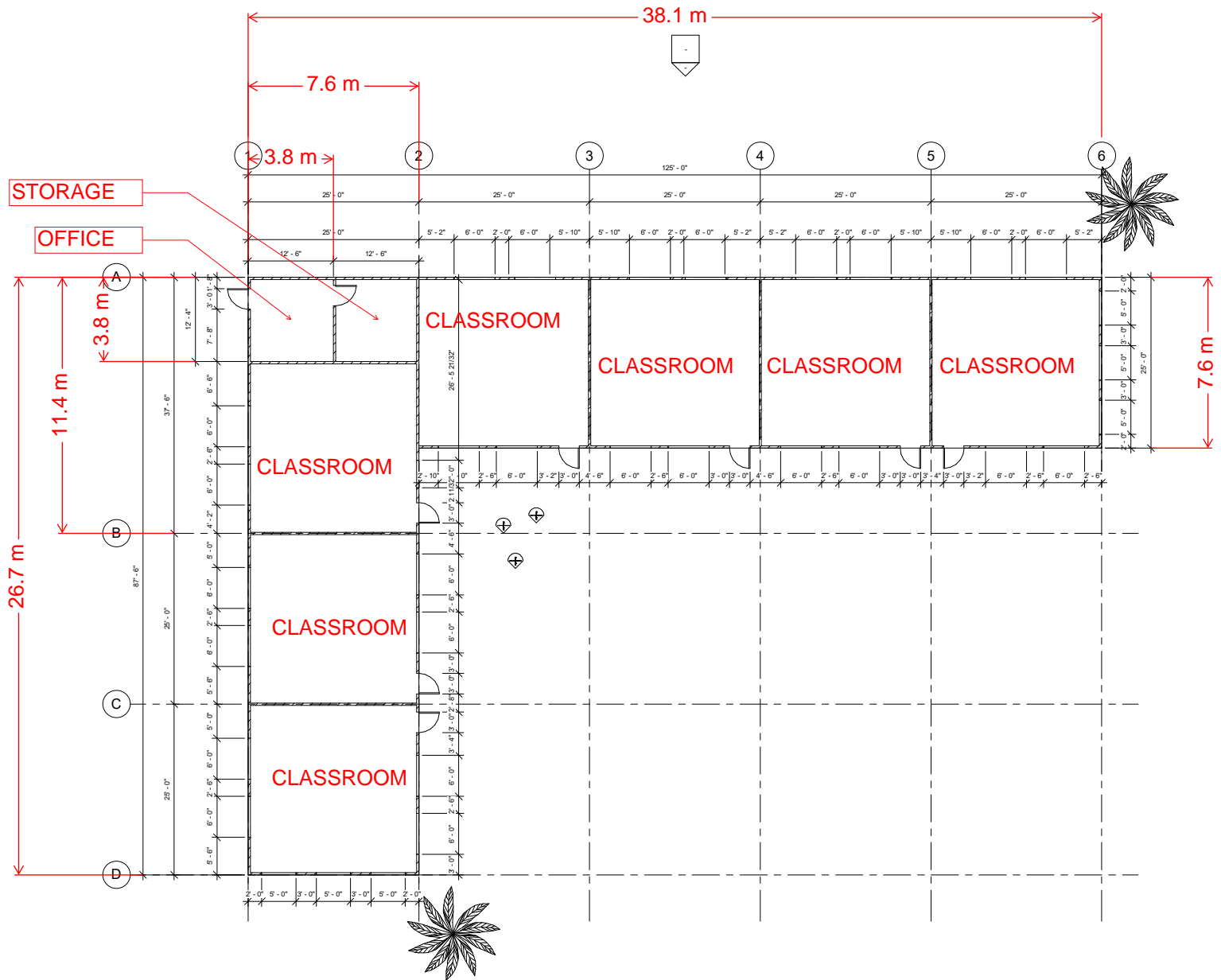


# KIBWTU PRIMARY SCHOOL

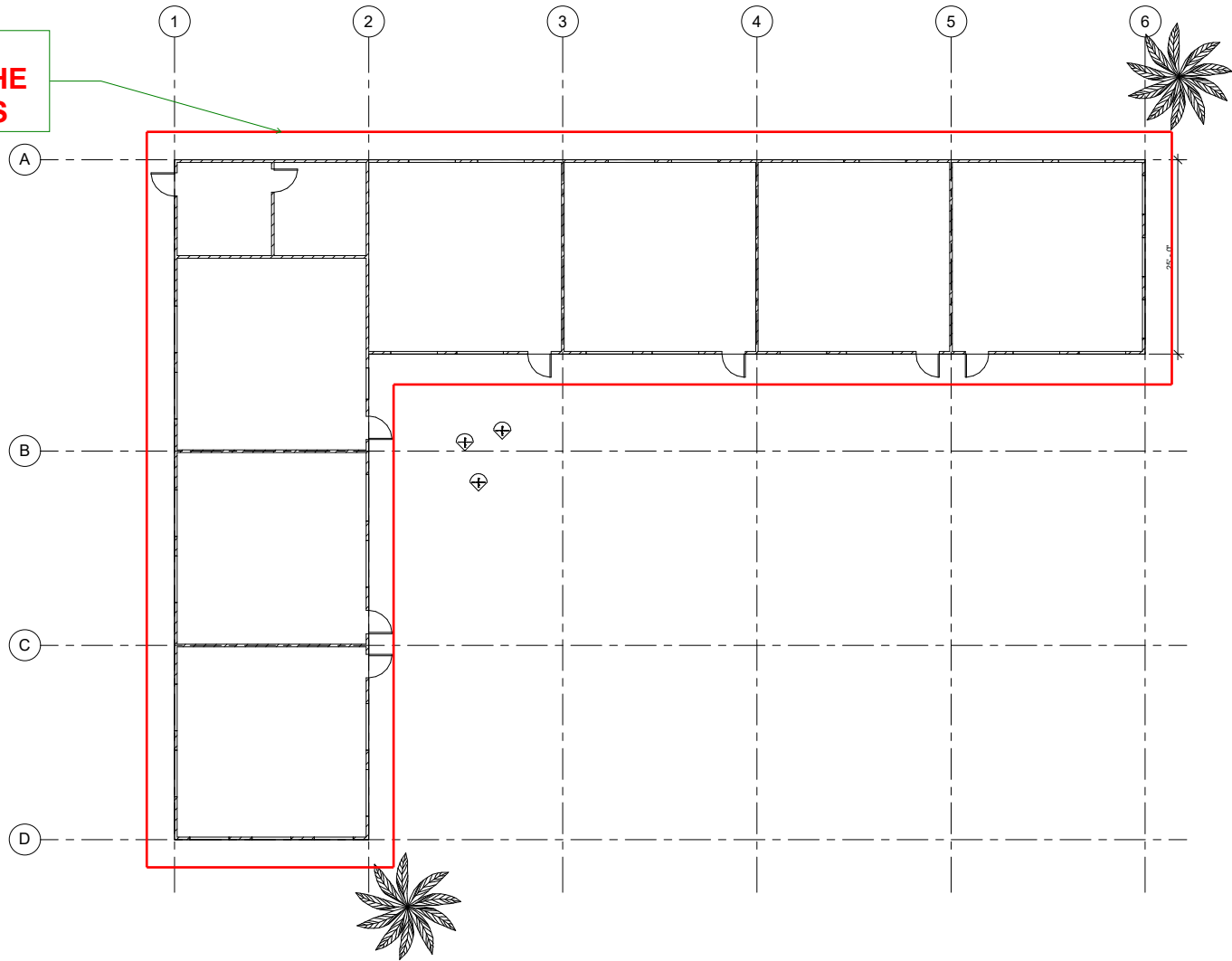




**NOTES:**

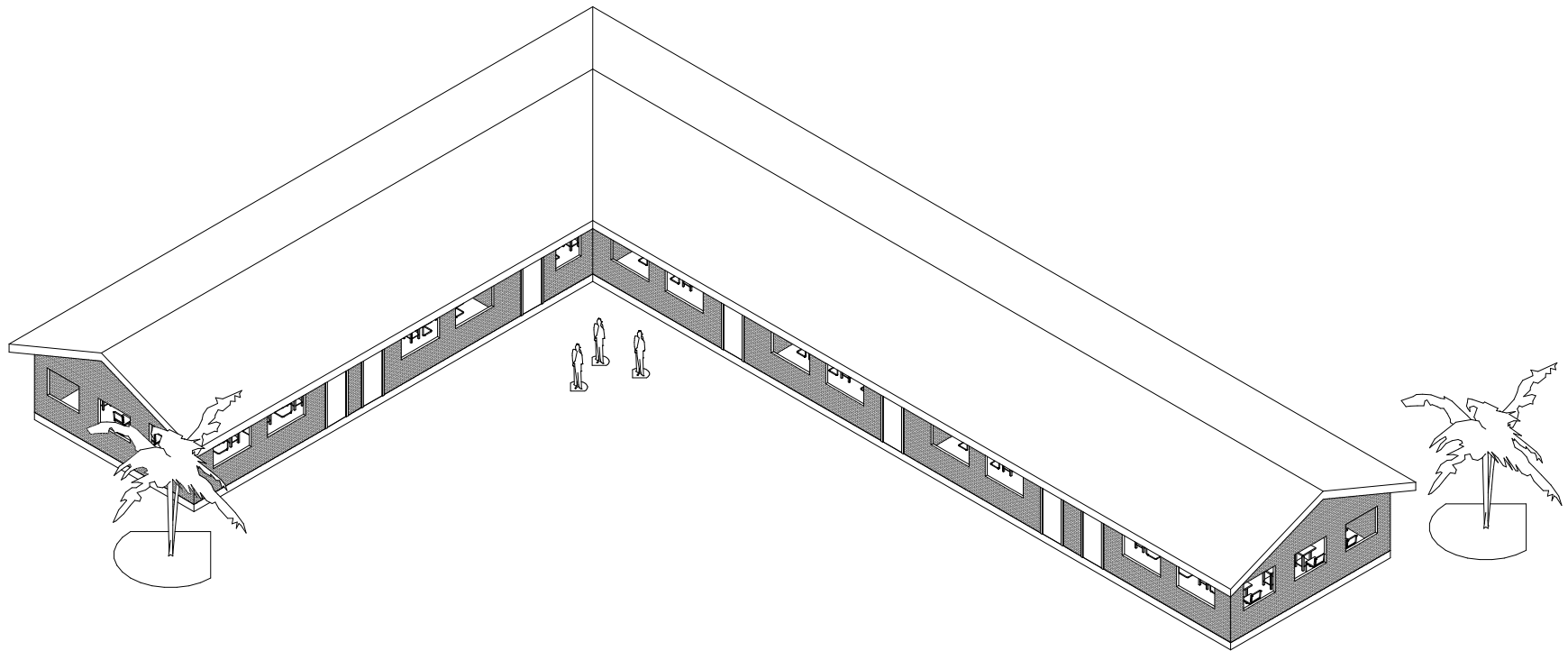
1. FLOOR TO BE RAISED 8 INCHES (20CM) OFF THE FINISH GRADE
2. FINISH FLOOR TO BE CONCRETE
3. ALL INTERIOR & EXTERIOR WALL TO BE CLAY-BRICK
4. METAL ROOFING WITH EXPOSED TRUSSES

**EDGE OF ROOF  
2' AWAY FROM THE  
EXTERIOR WALLS**



**NOTES:**

1. FLOOR TO BE RAISED 8 INCHES (20CM) OFF THE FINISH GRADE
2. FINISH FLOOR TO BE CONCRETE
3. ALL INTERIOR & EXTERIOR WALL TO BE CLAY-BRICK
4. METAL ROOFING WITH EXPOSED TRUSSES



**NOTES:**

1. FLOOR TO BE RAISED 8 INCHES (20CM) OFF THE FINISH GRADE
2. FINISH FLOOR TO BE CONCRETE
3. ALL INTERIOR & EXTERIOR WALL TO BE CLAY-BRICK
4. METAL ROOFING WITH EXPOSED TRUSSES

